

**TECKENTRUP**  
DOOR SOLUTIONS

**abc doors**

Exclusive  
UK Partner



**ITW**  
INDUSTRIETORE



## **ITW HIGH SPEED DOORS**

**ACCESS & ENERGY MANAGEMENT AT ITS FASTEST!**

**24.7** | NATIONAL  
SERVICE

# A ONE-STOP, COMPLIANT SOLUTION...



## DOORS, SHOP-FRONTS & CURTAIN WALLING...

- Manufacture
- Supply
- Installation
- Planned preventative maintenance
- Reactive & emergency repairs

...from the industry's leading door professionals...

## COMPETENCY, PROFESSIONALISM...

ABC Doors has decades of experience delivering door solutions. Our teams are fully employed professionals, appropriately qualified and accredited. At ABC Doors health & safety is always first - 100% job-specific risk assessments are completed on every visit. ABC Doors is a member of the key associations, trade bodies and schemes to ensure you can be certain of high competency and professionalism. Compliance is key too - certified products are available for your application and performance requirements.



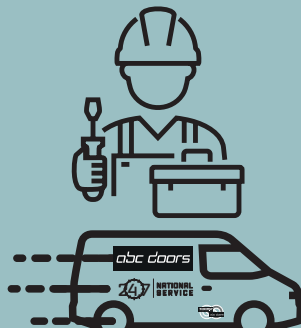
## CUSTOMER FOCUSED...

Our solutions are geared to your needs. We provide total product and service support, working closely with you to explore requirements for security, fire safety and optimum access. We'll identify problematic sites/assets for maintenance. We also do the simple things well - all engineers carry comprehensive parts stock for more first-time fixes.

**ABC Doors' objective is to deliver highly cost-effective products, reduce both maintenance and total life costs and minimise asset down-time - We'll keep you moving!**



Decades of experience



40+ mobile engineers



17 support staff



Efficiency through technology, electronic job management

2 service hubs supporting a nationwide network of



# CONTENTS

Page

<b>4</b>	<b>Overview</b>	Finding the right ITW high speed door for your requirements is simple.	
<b>5</b>	<b>Transsprint</b>	High speed, immediate complete opening height with compact door technology.	
<b>6</b>	<b>Transrapid</b>	High speed, high wind load resistance PVC door.	
<b>7</b>	<b>Transspeed BS</b>	Low noise, high speed door for areas with strong draughts.	
<b>8</b>	<b>Transspeed GA</b>	High speed door with quick emergency opening in wind protected areas.	
<b>9</b>	<b>Pro-Tec-TOR</b>	Fast action machine safety door that protect both people and machines.	
<b>10</b>	<b>Minirapid</b>	High speed for high hygiene and safety requirements.	
<b>11</b>	<b>Spiral Doors</b>	High speed, high frequency external door for energy efficiency.	

**24.7** | NATIONAL SERVICE





## ITW HIGH SPEED DOORS

Exclusive  
UK Partner



### EXCLUSIVELY FROM ABC DOORS & TECKENTRUP IN THE UK!

With an array of high speed and industrial doors available in the ITW range, finding the right product for your requirements is simple. ITW's range of bespoke manufactured, modular and expandable door solutions suit a variety of applications and environment control requirements; Industry, logistics, distribution, transport, automotive, clean room, cooling and cold storage, food, machinery protection, supermarkets, emergency exits and ATEX environments.

#### BENEFITS:

- High-performance product range
- Versatile application
- Environment control
- Energy saving
- Extremely tear-resistant curtains
- Horizontal and vertical opening options
- Interior and exterior use
- Customisation via colour options & printed curtains
- Window sections available

#### OPTIMISES BUSINESS OUTPUT AND EFFICIENCY...

Vertically or horizontally opening high speed doors help your business run smoothly and efficiently. Traffic flow is greatly improved with fast opening and closing cycles – no waiting for doors to open! Laterally opening door leaves make traffic flow even smoother with immediate height clearance, guaranteeing a trouble-free and safe flow of traffic. High speed doors also improve room climate and energy efficiency – the fast opening and closing reduces heat loss and helps manage internal controlled environments if necessary.



#### ENERGY SAVING AND ENVIRONMENTAL CONTROL...

As well as protecting against pests, vermin and dust, ITW's range of high speed doors also reduces energy loss through its fast opening and closing cycles. Spiral doors have insulated sections for external opening applications.

#### MACHINE SAFETY PROTECTION...

With the option of integrating into conveyor systems to stop unauthorised access, shield workers from flying sparks or isolating steps in a manufacturing process, ITW's high speed doors can be designed to meet the demands of occupational safety in high tech, machine heavy manufacturing processes.



# TRANSSPRINT

## HIGH SPEED, IMMEDIATE COMPLETE OPENING HEIGHT WITH COMPACT DOOR TECHNOLOGY

Opening at up to three meters per second, the lateral opening of the ITW Transsprint door leaves achieves immediate clearance height that is the entire passage height. This greatly reduces interruptions to traffic flow and guarantees safe and trouble-free passage. Forklift truck mast strikes are much less likely with horizontal opening - a common issue with vertical systems.

When hygiene requirements are necessary, the stainless steel version of the Transsprint meets food, chemical and pharmaceutical industry regulations.

### TECHNICAL DATA:

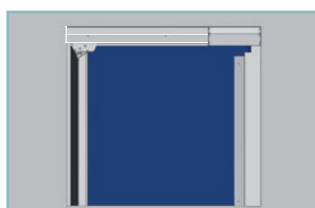
- Opening speed up to 3.0m/s
- Closing speed up to 1.5m/s
- Door sizes up to 6.0m height and 6.0m width
- DR2100 microprocessor control system with main switch and integrated frequency converter
- 230 V/50Hz, IP66 drive
- Emergency stop switch and 3-fold push butt on in steel control cabinet
- Lintel height min. 250mm, depending on the door size and design

### FEATURES:

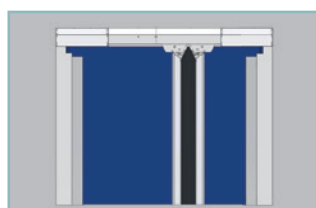
- Internal and external applications
- High speed opening & closing (horizontal)
- Immediate complete passage height availability
- Crash protection
- Light grid contactless protection
- Large door openings
- Wide range of colours

### SAFETY:

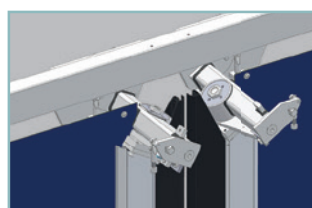
- Access protection due to all-round cladding
- Surveillance light barrier or
- Safety contact strip in each closing beam
- Drive-through monitoring by means of non-contact light grid (optional)
- Anti-crash function (optional)
- Emergency opening door, can be pushed open manually
- Signal lights and traffic light control (optional)



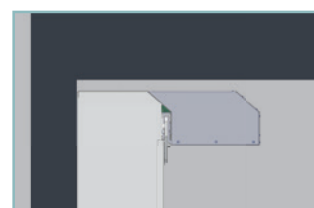
Single Wing



Asymmetrical with two separate drives and controls



Transsprint C with crash protection



Lintel requirement 250mm



# TRANSRAPID

## HIGH SPEED, HIGH WIND LOAD RESISTANCE PVC DOOR

The ITW Transrapid door is fast opening and closing roll-up door with a 3mm (approx.) thick curtain. Vertically opening, the door operates quietly and can be designed to suit large openings (10,000mm x 8,500mm). The Transrapid has a low lintel requirement.

### FEATURES:

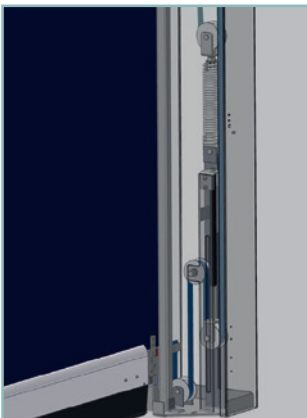
- Internal and external applications
- High speed opening & closing (vertical)
- Light grid contactless protection
- Designed for large door openings
- Extensive colour choice
- 3 mm thick fabric curtain
- Permanently tensioned curtain
- Tension spring system for weight balance
- Resistance to wind load (EN12424) Class 3
- Opening speed - 2,0m/s
- Closing speed - 0,8m/s

### TECHNICAL DATA:

- Opening speed up to 2.0m/s
- Closing speed up to 0.8m/s
- Door sizes up to 12,000mm height and 8.500mm width
- DR2100 microprocessor control system with main switch and integrated frequency converter
- 230 V/50Hz, IP54 operator
- Required lintel height min. 580mm

### SAFETY:

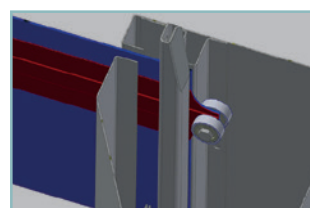
- Access protection by means of all-round cladding
- Drive-through monitoring by means of light barrier and safety contact strip
- Emergency opening by means of pull cable with break release or reel chain
- Signal lights and traffic light control (optional)



Weight compensation and permanent curtain tension



Bale cladding



Wind pressure protection



# TRANSSPEED BS

## LOW NOISE, HIGH SPEED DOOR FOR AREAS WITH STRONG DRAUGHTS

The ITW Transspeed BS high speed door is a good solution for openings frequented by forklifts or floor vehicles. Used as an additional hall, warehouse, or factory closure or as an interior door, the different curtain designs can be adapted to meet a range of requirements. Through a permanent curtain tensioning system, the door leaf is kept under tension when opening and closing.



### FEATURES:

- Opening speed up to 2.0m/s
- Door size up to 6.0m x 6.0m
- Resistance to wind load up to class 3
- Permanent curtain tension
- Wide range of colours
- Atex
- V2A
- Deep freeze
- Fly screen

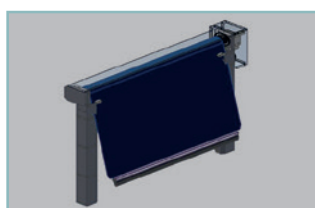


### TECHNICAL DATA:

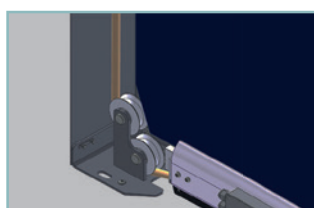
- Opening speed up to 2.0m/s
- Closing speed up to 0.8m/s
- Door sizes up to 6.0m height and 6.0m width
- DR2100 microprocessor control system with main switch and integrated frequency converter
- 230 V/50Hz, IP54 Operator
- Required lintel height min. 447mm
- Curtain available in various colours or fully printed with a motif of your choice

### SAFETY:

- Access protection by means of all-round cladding
- Passage monitoring by means of contactless light grid
- Anti-crash function - automatic reset (optional)
- Emergency opening by hand crank or reel chain
- Signal lights and traffic light control (optional)



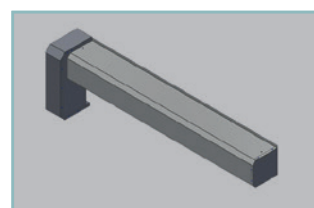
Anti-Crash-System



Curtain tension



Light grid



Bale and drive cover



# TRANSSPEED GA

## HIGH SPEED DOOR WITH QUICK EMERGENCY OPENING IN WIND PROTECTED AREAS

The ITW Transspeed GA's tension spring system for weight compensation offers fast emergency opening of the door. Applicable where the door is regularly used by forklifts and floor vehicles, the Transspeed can be used as an additional hall closure or as an interior door. To meet your design requirements, the door curtain can be used to meet a wide range of requirements.

### FEATURES:

- Opening speed up to 2.0m/s
- Door size up to 6.0m x 6.0m
- Resistance to wind load up to class 3
- Weight compensation
- Wide range of colours
- Escape route approval
- Fly screen
- Automatic opening in case of power failure
- V2A

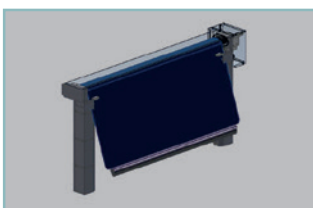


### TECHNICAL DATA:

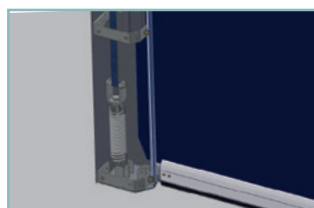
- Opening speed up to 2.0m/s
- Closing speed up to 0.8m/s
- Door sizes up to 4.0m height and 4.0m width
- DR2100 microprocessor control system with main switch and integrated frequency converter
- 230 V/50Hz, IP54 Operator
- Required lintel height min. 447mm
- Curtain available in various colour or fully printed with a motif of your choice

### SAFETY:

- Access protection by means of all-round cladding
- Passage monitoring by means of contactless light grid
- Anti-crash function - automatic reset (optional)
- Emergency opening by pull rope
- Automatic opening (optional)



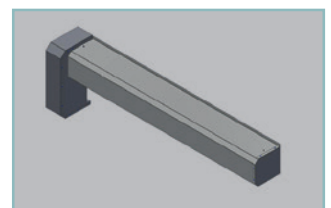
Anti-Crash-System



Counterbalance



Light grid



Bale and drive cover



# PRO-TEC-TOR

## FAST ACTION MACHINE SAFETY DOOR THAT PROTECT BOTH PEOPLE AND MACHINES

The ITW Pro-Tec-TOR meets the high demands in occupational safety in high tech manufacturing processes. Providing short downtimes and protection for employees, the Pro-Tec-TOR allows unhindered access to the machine/workpiece whilst also providing complete isolation of a production step. Quick door cycle allows fast production steps to be safely undertaken protecting workers from flying sparks, glowing chips or welding spatter.



### FEATURES:

- Use as movable guards protective device
- Safety switch and emergency stop
- Performance level e
- Opening speed up to 3.0m/s
- Closing speed up to 1.7m/s
- Door sizes up to 8.0m width and 5.0m height
- Fast cycle times
- Space-saving compact design

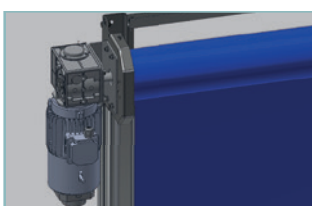


### TECHNICAL DATA:

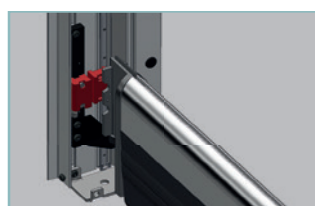
- Use as movable guards protective device
- Safety switch and EMERGENCY STOP
- Performance level e
- Opening speed up to 3.0m/s
- Closing speed up to 1.7m/s
- Door sizes up to 8.0m width and 5.0m height

### OPTIONS:

- AIDA control concept, tailored to the requirements of the automotive industry
- Variable versions of the control concept
- Special brackets
- Protection by light curtains
- Monitoring laser scanner to increase the closing speed



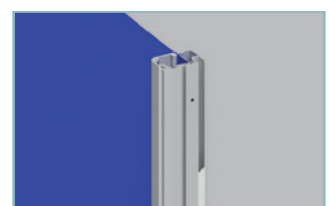
Drive in 90° steps rotatable



Safety limit switch can be positioned exactly & tamper-proof in the running rail



Floor end profiles with EPDM rubber and electrical safety contact strip



Integrated cable ducts and mounting grooves



# MINIRAPID

## HIGH SPEED FOR HIGH HYGIENE AND SAFETY REQUIREMENTS

The stable and self-supporting ITW Minirapid modular system is highly sophisticated requiring little lateral space. The tight-fitting fabric curtain of the Minirapid provides good sealing but is still flexible and versatile, providing a diverse range of applications - clean rooms, supermarkets, food industry, machinery protection, pharmaceutical/chemical spaces and wet areas.

### FEATURES:

- Low-cost solution
- Internal applications
- Quick opening & closing (vertical)
- Crash protection
- Contactless protection through a light grid
- Wide range of colours
- Low lintel required
- Resistance to wind load (EN12424) Class 0
- Opening speed - 2,0m/s
- Closing speed - 0,8m/s
- Openings up to 5,000 x 5,000mm

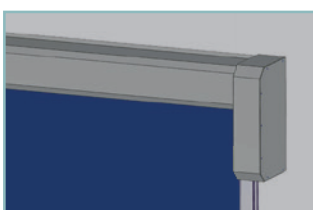


### TECHNICAL DATA:

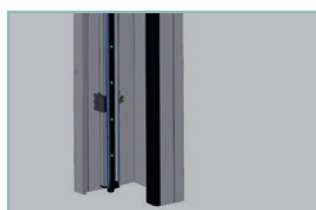
- Opening speed up to 2.0m/s
- Closing speed up to 0.8m/s
- Resistance to wind load up to class 1
- Door sizes up to 5.0m high and 5.0m wide
- DR2100 microprocessor control system with main switch and integrated frequency converter
- 230 V/50Hz, IP54 Operator
- Required lintel height min. 345mm
- Curtain available in various colours or fully printed with a motif of your choice

### SAFETY:

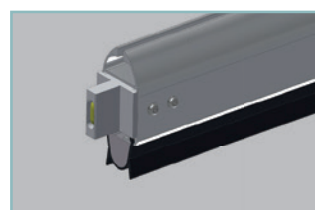
- Passage monitoring by means of contactless light grid
- Anti -crash function (optional)
- Emergency opening by hand crank or reel chain
- Signal lights and traffic light control (optional)



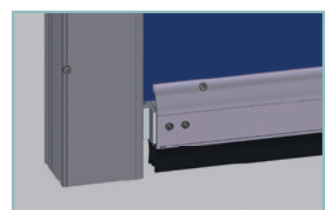
Drive and bale cover



Light grid



Anti -crash function



Crash in the side guides



## HIGH SPEED, HIGH FREQUENCY EXTERNAL DOOR FOR ENERGY EFFICIENCY

The sophisticated ITW Spiral Door offers quiet operation roll-up technology and an almost wear-free design due to the contactless spiral movement. Specially developed for exterior openings, the door is designed for high frequency use and has an integrated lightgrid. The fast opening speed of a spiral door and its heat insulating properties ensures an increase in energy efficiency and savings.



### FEATURES:

- Gate size up to 6,000mm x 6,000mm
- External applications
- Quick opening & closing (vertical)
- Smooth running thanks to the plastic spiral
- Energy-efficient thanks to thermally separated profiles
- Contactless protection through a light grid
- Hinged guide rail
- RAL of choice
- Resistance to wind load (EN12424) Class 3 (Optional: Class 4)
- Opening speed - 2,5m/s
- Closing speed - 1,0m/s

### TECHNICAL DATA:

- DR2100 microprocessor control with main switch and integrated frequency converter
- 230 V/50Hz, IP54 Drive
- Round spiral fitting for approx. 1,000mm lintel height
- Oval spiral fitting for approx. 745mm lintel height
- Low lintel fitting for underground garage doors
- Standard: RAL9006 white aluminium,
- Painting in RAL colours possible various
- Smooth drive-up into a stable and wear-free plastic spiral due to non-contact winding technology
- Smooth running and durable running due to toothed belt transmission
- Track sealing on both sides

### SAFETY:

- Access protection by means of all-round cladding
- Passage monitoring by means of light grid
- Emergency opening by reel chain
- Signal lights and traffic light control (optional)



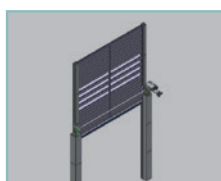
Round spiral



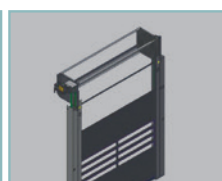
Oval spiral



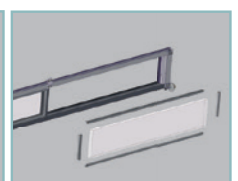
Low camber



Vertical runner



Height guided deflection



Panels & sections quick exchange due to glass retaining strips

## EXTENSIVE PRODUCT PORTFOLIO...

ABC's product portfolio is extensive and complete. We manufacture within our group of companies and also source products from specialist supply partners. Products combine with ABC expertise into the ideal door and service solution for you.



Steel Security Doors



Aluminium Doors



Automatic Doors



Barriers



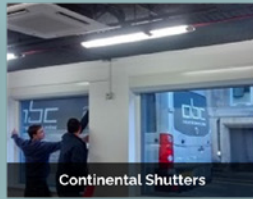
Loading Bay Equipment



ITW High Speed Doors



Sliding Insulated Fire/Security Doors



Continental Shutters



Shop Fronts & Curtain Walling



Uninsulated & Insulated Shutters



Sectional Doors



Fire Doors



Fire Shutters



Conveyor System Fire Protection



Gates



Window Grilles

## A TECKENTRUP FAMILY MEMBER...

ABC Doors was acquired in 2022 and is now part of the Teckentrup family of companies.

Teckentrup, a family run business, has more than 90 years' experience as a solutions provider and manufacturer of commercial and industrial doors. Teckentrup has operations in Warrington, Germany and across Europe...

...And now Irlam & Hitchin



Teckentrup GmbH & Co. KG, Verl-Sürenheide



Teckentrup UK Limited, Warrington



Factory Verl



Factory Großzöberitz

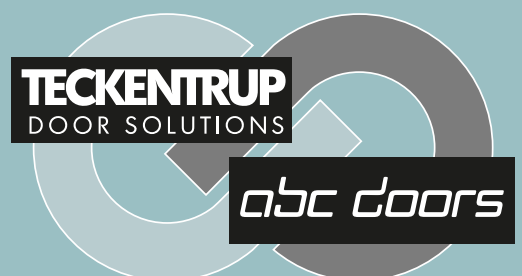


NORTHERN DEPOT & HEAD OFFICE  
ABC Industrial Doors Limited, Wharfside Business Park,  
Irlam Wharf Rd, Irlam M44 5PN

National Help Desk t: 0808 169 5030  
e: info@abcdoors.co.uk

SOUTHERN DEPOT  
ABC Industrial Doors Limited, Unit B2 Pierson Court,  
Knowl Piece, Hitchin, Hertfordshire SG4 0TY

National Help Desk t: 0808 169 5030  
e: info@abcdoors.co.uk



TECKENTRUP  
DOOR SOLUTIONS

abc doors