



ECClos[®]-Q

Conveyor system closure designed as a space-saving, robust damper made of sheet metal panels

Product description

The horizontally slewing damper construction requires very little space in the lintel area and is therefore an interesting option for conventional closures in damper design. ECClos-Q meets the requirements of classifications EI 30 to EI 120 and EW 240 (aerated concrete). The damper blade features a very stable sandwich construction and is completely enclosed by a sheet metal casing. ECClos-Q is suitable for continuous and separate conveyor systems, such as baggage belt conveyors. For continuous conveyor systems, the fixed panel is customised and the surface can be designed according to customer requirements in various designs.

Type	Fire protection closure as part of track-bound conveyor systems	Closing cycles	C5 number of closing cycles 200,000
Proof of usability	European Technical Assessment - ETA	Re-opening	electromotive (standard)
Closing direction	pivoting vertically	Conveyor system	Continuous belt conveyor system • Continuous suspension chain conveyor • Continuous roller conveyor system • Continuous conveyor system
Fire resistance	E 240 • EI 30 • EI 60 • EI 90 • EI 120 • tested according to DIN EN 1366-7 • classified according to DIN EN 13501-2		

Constructive system design (Drawing: System: FAA-Q_konsole)

Required wall quality

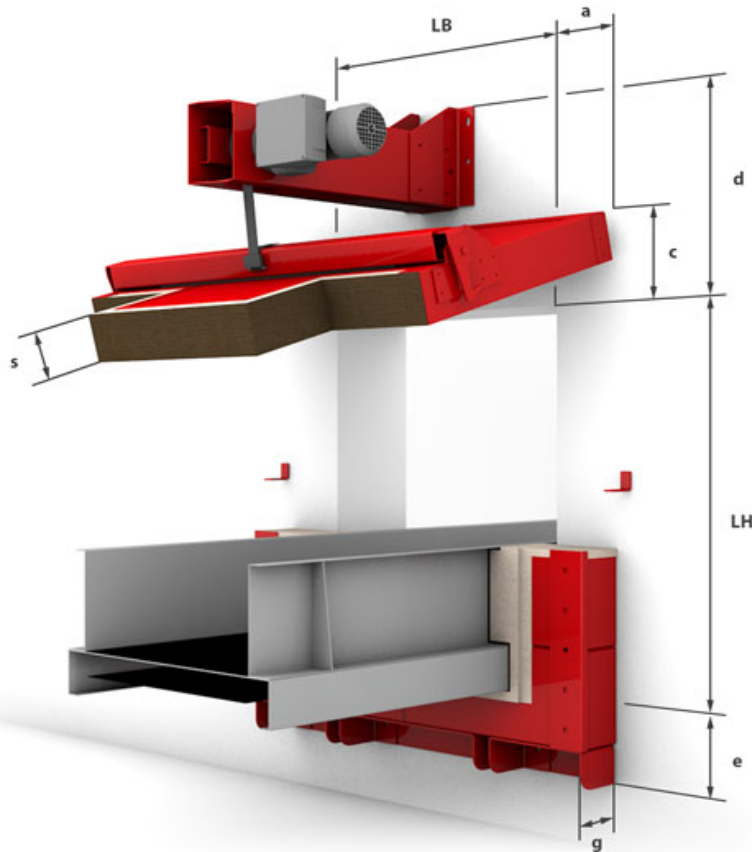
wall thickness	$d \geq 200$ mm
masonry	according to DIN 1053-1
concrete	according to DIN 1045
aerated concrete	according to DIN 4165
Lightweight stud wall	according to DIN 4102

approval range

LW	850 mm - 1955 mm
LH	900 mm - 1380 mm

Technical feasibility

LW	up to 4500 mm
LH	up to 2500 mm



a = 160 c = 257 d = 640 e = 180 g = 150 s = 122

www.abcdoors.co.uk

NORTHERN DEPOT & HEAD OFFICE
ABC Industrial Doors Limited, Wharfside Business Park,
Irlam Wharf Rd, Irlam M44 5PN

National Help Desk t: 0808 169 5030
e: info@abcdoors.co.uk

SOUTHERN DEPOT
ABC Industrial Doors Limited, Unit B2 Pierson Court,
Knowl Piece, Hitchin, Hertfordshire SG4 0TY

National Help Desk t: 0808 169 5030
e: info@abcdoors.co.uk